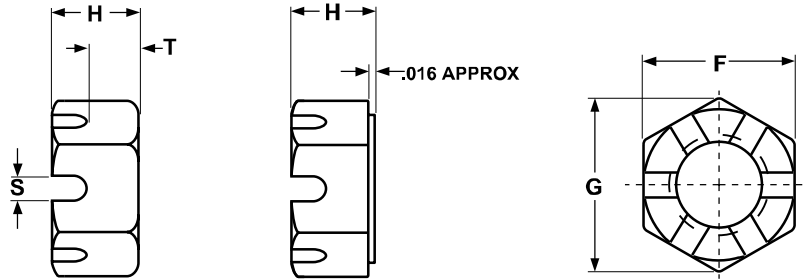




TRANSHOW INDUSTRY LIMITED

GAOYANG RD, ZHOUEAN VILLAGE, JIANGSHAN TOWN
 YINZHOU DISTRICT, NINGBO CITY, 315100 CHINA
 Tel: +86-574-8736.7873 Fax: +86-574-8736.4349
www.transhow.net Email: transhow@transhow.net

SLOTTED HEX NUT



HEX SLOTTED NUTS															ANSI/ASME B18.2.2
Nominal Size or Basic Major Diameter of Thread		F			G		H			T		S		Runout of Bearing Surface FIM Max	
		Width Across Flats			Width Across Corners		Thickness			Unslotted Thickness		Width of Slot			
		Basic	Max	Min	Max	Min	Basic	Max	Min	Max	Min	Max	Min		
1/4	0.2500	7/16	0.438	0.428	0.505	0.488	7/32	0.226	0.212	0.14	0.12	0.10	0.07	0.015	
5/16	0.3125	1/2	0.500	0.489	0.577	0.557	17/64	0.273	0.258	0.18	0.16	0.12	0.09	0.016	
3/8	0.3750	9/16	0.562	0.551	0.650	0.628	21/64	0.337	0.320	0.21	0.19	0.15	0.12	0.018	
7/16	0.4375	11/16	0.688	0.675	0.794	0.768	3/8	0.385	0.365	0.23	0.21	0.15	0.12	0.018	
1/2	0.5000	3/4	0.750	0.736	0.866	0.840	7/16	0.448	0.427	0.29	0.27	0.18	0.15	0.019	
9/16	0.5625	7/8	0.875	0.861	1.010	0.982	31/64	0.496	0.473	0.31	0.29	0.18	0.15	0.020	
5/8	0.6250	15/16	0.938	0.922	1.083	1.051	35/64	0.559	0.535	0.34	0.32	0.24	0.18	0.021	
3/4	0.7500	1-1/8	1.125	1.088	1.299	1.240	41/64	0.665	0.617	0.40	0.38	0.24	0.18	0.023	
7/8	0.8750	1-5/16	1.312	1.269	1.516	1.447	3/4	0.776	0.724	0.52	0.49	0.24	0.18	0.025	
1	1.0000	1-1/2	1.500	1.450	1.732	1.653	55/64	0.887	0.831	0.59	0.56	0.30	0.24	0.027	
1-1/8	1.1250	1-11/16	1.688	1.631	1.949	1.859	31/32	0.999	0.939	0.64	0.61	0.33	0.24	0.030	
1-1/4	1.2500	1-7/8	1.875	1.812	2.165	2.066	1-1/16	1.094	1.030	0.70	0.67	0.40	0.31	0.033	
1-1/2	1.5000	2-1/4	2.250	2.175	2.598	2.480	1-9/32	1.317	1.245	0.86	0.82	0.46	0.37	0.039	